

**EPPING FOREST DISTRICT COUNCIL
NOTES OF A MEETING OF STRONGER COMMUNITIES SELECT COMMITTEE
HELD ON TUESDAY, 30 MARCH 2021
IN VIRTUAL MEETING ON ZOOM
AT 7.00 - 8.40 PM**

Members Present:	D Sunger (Chairman), J McIvor (Vice-Chairman), I Hadley, J Lea, S Rackham, J H Whitehouse, D Wixley and J Jennings
Other members present:	R Brookes, S Kane, S Murray, A Patel, J Philip, M Sartin, H Whitbread and A Lion
Apologies for Absence:	A Beales, A Mitchell, D Plummer and J Share-Bernia
Officers Present	N Dawe (Chief Operating Officer), N Cole (Corporate Communications Officer), J Leither (Democratic Services Officer), R Perrin (Democratic and Electoral Services Officer), M Thompson (Service Manager (Technical)) and C Wiggins (Community Resilience Service Manager)

32. WEBCASTING INTRODUCTION

The Chairman made a short address to remind all present that the virtual meeting would be broadcast on the Internet, and that the Council had adopted a protocol for the webcasting of its meetings.

33. SUBSTITUTE MEMBERS

The Committee noted that Councillor J Jennings had been appointed as a substitute for Councillor A Beales.

34. DECLARATIONS OF INTEREST

No declarations of interest were declared pursuant to the Council's Member Code of Conduct.

35. NOTES OF PREVIOUS MEETING

RESOLVED:

That the notes of the meeting held 14 January 2021 were agreed as a correct record.

36. TERMS OF REFERENCE & WORK PROGRAMME

The Committee noted the terms of reference and work programme.

37. PRESENTATION FROM THE DISTRICT COMMANDER FOR EPPING FOREST AND BRENTWOOD

The District Commander for Epping Forest and Brentwood, Chief Inspector Ant Alcock gave a presentation on the last 12 months of policing and crime issues in the District, which has been attached to minutes.

After the presentation, the Committee asked following questions;

- How many of the call out for Covid offences had actually led to fines or penalties? C/Insp A Alcock advised that the Police had abided by the four additional enforcements powers, although issuing fines had not been a policing priority there had been fewer than hundred across Essex. It was noted that where deliberate breaches had occurred the police had prosecuted.
- Has social media been used to pick up Covid breaches? C/Insp A Alcock advised the police followed up where necessary.
- What were the three categories of domestic violence; how did they escalate; and how were the victims dealt with? C/Insp A Alcock advised that the categories focussed on the risk of harm which was assessed by the attending Officers. A specialised risk assessment was used which would provide the officer with the category and this process was used nationally.
- What schools were covered by the two Children's and Young Persons(CYP) officers; and whether the new Disrupter Teams would affect the Local Community Teams? C/Insp A Alcock advised that there could be officers' movement with the Teams although recruitment would then be requested for the other teams. The CYP officers covered all of the Districts secondary schools and each school had an allocated officer.
- Would it be possible for officers to speak with residents of Blenheim Square, North Weald regarding the anti social behaviour being experienced? C/Insp A Alcock advised that the residents would need to give their consent for their details to be shared and then they could be passed onto C Wiggins to share with the Police.
- Whether surveillance could be carried out in more rural areas in relation to drug taking? C/Insp A Alcock advised that surveillance tended to be used for serious crime, although patrols could be engaged. He requested all crimes to be report either to the police directly or anonymously through Crimestoppers.
- What the impacts of Covid were on the Police; whether there were any figures in relation to the vaccination roll out for officers; and that the forecourt of Loughton Police Station required attention as this may affect the public perception. C/Insp A Alcock advised that officers were beginning to get the vaccinations as part of the roll out and vulnerable individuals had been vaccinated and shielded where required. The sickness rates throughout the pandemic had been lower and this had been reported nationally. He noted the comments about the Police station and would take the comments back.
- What were laws surrounding the use of electric scooters? C/Insp A Alcock advised that electric scooters were not permitted by legislation although there were local authority bylaws. Enforcement was prioritised on a risk basis and if appropriate officers would stop users of electric scooters and prosecute. He asked Members to report issues, so that the Police were aware, and the Local Community Police Officers could be involved.
- What happens when a fight breaks out regarding the wearing of face masks in public? C/Insp A Alcock advised that where a breach was made in a criminal setting, prosecution would be made.
- There appeared to be a large turn over of Local Community Police officers, could consistency be provided?; What plans were in place for the ending of the lockdown period?; Did the Police regularly patrol the Roding Valley Recreation Ground as residents felt this area was not being patrolled?; and could he comment on what the public perceived to be 'light touch policing' with regards to the drug use, litter and anti-social behaviour in High Beach area throughout the lockdown period. Furthermore, whether there would be a case review into the tragic incident involving Harley Watson on 2 December 2019 and whether the appropriate interventions had taken place.

C/Insp A Alcock advised that unfortunately consistency of Local Policing could not be controlled due to individuals moving to other opportunities within the organisation. In regards to the ending of Covid restrictions, an extraordinary meeting of the Community Safety Partnership had been organised, which had planned and discussed the particulars for District.

He advised that the Roding Valley Recreation Ground had been highlighted as a priority for patrols in relation to Covid associated matters and he was disappointed to hear that residents did not feel this area was being patrolled. Furthermore, he felt the policing response to the issues experienced in the High Beach area were detailed and considered, whilst being weighed up against other priorities in Essex. It was noted that on one particular day another risk in Southend presented a greater risk and required the Public Order contingency of Essex Police to attend. There had been a lot of discussions between the Corporation of London, Petitioners and the Police and the engagement between everyone had positively increased and included the gating of Manor Road and removing parked vehicles after dark in this area.

Lastly, there has been a review by the Independent Office of Police Complaints, which had deemed that the Police had done everything they could of within their area.

- What could be done about the rise in use of private security? C/Insp A Alcock advised that it was a business proposition and the Police could not influence or have an opinion on this private matter. It was a concern that residents thought they required this although residents should continue to build on their relationships with their Local Community Police Officers. There were options for Town/Parish Councils to self fund PCSO's but that would be for area to determine.

The Chairman thanked C/Insp A Alcock for the presentation and attending the meeting.

38. COMMUNITY SAFETY PARTNERSHIP ANNUAL REPORT AND REVIEW OF THE DISTRICT STRATEGIC ASSESSMENT

The Specialist Technical Services Officer, Caroline Wiggins presented the annual Strategic Assessment which included the Epping Forest Community Safety Partnership (CSP) Annual Strategic Assessment, Annual Report and Partnership Plan. This was used to direct and guide activities, under the requirements as responsible authorities, of the Crime and Disorder Act 1998.

The strategic assessment included;

- an analysis of the levels and patterns of crime and disorder and substance misuse in the area;
- an analysis of the changes in those levels and patterns since the previous strategic assessment;
- an analysis of why those changes had occurred;
- the matters which the responsible authorities should prioritise when each were exercising their functions to reduce crime and disorder and to combat substance misuse in their area;
- the matters which the persons living and working in the area consider the responsible authorities should prioritise when each were exercising their

functions to reduce crime and disorder and to combat substance misuse in the area; and

- an assessment of the extent to which the partnership plan for the previous year has been implemented.

The Epping Forest District worked closely with Essex Police analysts to produce the documents and the timescales had been extended within the Report to consider the unprecedented impact of Covid on the CSP and wider agencies over the last year. The CSP Plan was a new addition of the Partnership and provided information at a glance on the planned delivery of Epping Forest CSP going forward.

The Committee asked the following questions;

- Was there a contact number that could be given to homeless people?; and did the Council work with other bordering authorities in addition to the Metropolitan Police? C Wiggins advised that any homeless person should firstly, be directed to the Council's Homeless Prevention Team. The New Horizons project mentioned in the report was for more entrenched homelessness and assisted people with a holistic approach. The project was now being extended to other areas such as Harlow, Brentwood and Tendering as a result of the success in Epping and Chelmsford. C Wiggins advised that the Council did work with other bordering Police authorities and had a good working relationship with Herts.
- Could the Epping Forest Community Safety Partnership (CSP) Plan on a Page include additional details of the planned schemes for the three priorities; and what was a Local Action Group (LAG)? C Wiggins advised that a glossary would be included in next years CSP Plan with a further explanation of each scheme. The LAG were the bringing together of Council officers and multi-agencies to create an overall approach to case specific anti-social behaviour issues/locations within the District.

The Housing & Community Services Portfolio Holder, Councillor H Whitbread thanked the team for all their hard work over the difficult year.

RESOLVED:

1. That the Community Safety Partnership Annual Strategic Assessment and Annual Report be noted; and
2. That going forward the Epping Forest community Safety Partnership Plan on a Page 2020/21 includes a glossary and additional detail on the schemes.

39. SIX-MONTH REPORT ON THE WORK OF THE COUNCIL FUNDED POLICE OFFICERS

The Specialist Technical Assessment, Caroline Wiggins gave a 6 monthly update on the work and range of operations of the Council's funded Police team.

The Council continued to fund the employment of an additional Police Sergeant and 2 Police Constables to supplement existing local policing resources. The team were incepted in July 2018 with an initial 3-year contract, which had now been extended for a further two years. The team were tasked in-line with District Community Safety

Partnership (CSP) priorities which were identified through the Annual Strategic Assessment and aligned with the priorities set by the Police, Fire and Crime Commissioner's (PFCC). Also the team could be requested via a tasking process, to support any Council departments where there was an identified threat, harm or risk to staff. A service level agreement was in place to prevent abstraction of the officers except in extreme cases or high priority incidents.

The team accepted and completed 50 tasking requests in 2020 in spite of the challenges presented by COVID-19 which included:

- In response to an increase in serious acquisitive crime in the south of the District, the team lead on a cross border operation with the Metropolitan Police, sharing resources and tactical assets to target key routes in and out of the District. The operation resulted in 4 arrests, 4 pursuits, 10 stop searches, 25 successful ANPR activation responses (i.e. where there was a 'live' marker and the vehicle was stopped);
- Supporting council officers with joint visits at licenced and business premises highlighted to be committing COVID legislation breaches;
- Support Planning Enforcement with the initial site visit and subsequent service of injunction at a location where there was threat, harm and risk to staff;
- Site visit with Planning Enforcement and Community Resilience at a venue where the occupant presents risk to staff;
- Site visits and representation at professionals meeting in relation to high-risk homeless person;
- Targeted patrols at three separate locations in the District which were at risk of persistent ASB and current problems for both police and council;
- Proactive arrest of youth riding a stolen moped and in possession of a large knife in Loughton. Subsequently passed to the Youth Offending Team for a disposal decision;
- Following an increase in acquisitive crime in Waltham Abbey, the team deployed to a recent catalytic converter theft. Whilst on route a second unrelated car failed to stop, and the driver was arrested. Enquiries showed the car had been recently stolen from the town;
- Whilst on patrol in the Roydon area the team saw a van that was known to be cloned. The offenders tried to make off but were detained. The driver was a prolific offender who was wanted on a recall to prison. The van and driver were linked to multiple thefts in the District. The driver was sentenced to 42 weeks imprisonment;
- The last 3 months had seen the team recover 11 stolen vehicles to the value of approximately £900k. This was as a result of the team interpreting various data streams to locate vehicles stolen from the District. A particular highlight was the recovery of a rare Brabus 6x6 truck stolen by burglary in Loughton.

RESOLVED:

That the six-month report of the Council funded Police Officers be noted.

40. DATE OF FUTURE MEETING

The Committee noted that the date of the next meeting would be held on 22 April 2021.

This page is intentionally left blank

Stronger Communities Select Committee

Chief Inspector Ant Alcock

Minute Item 37



Help people Keep people safe Catch criminals

How we work

WITH EACH OTHER



WITH COMMUNITIES AND PARTNERS



EFFICIENTLY AND EFFECTIVELY



Our priorities

To prevent, investigate and tackle:



To support and protect:



Main effort

- Victims
- Vulnerability
- Violence
- Visibility



Current Policing Matters

- Exiting Lockdown
- Police Crime Sentencing and Courts Bill
- Violence Against Women and Girls
- Equality, Diversity, Inclusion and Cohesion



Essex Police Diversity, Equality and Inclusion Strategy 2020-2025

Our Objectives*

*Public Sector Equality Objectives

Improve inclusive culture and increase awareness and understanding of diversity and equality

through delivery of mandatory training, equality data analysis, equality and health Impact assessment, and effective community engagement.

Adopt and advance

the NPCC Diversity, Equality and Inclusion Strategy 2018-2025 and accompanying toolkits.



Increase satisfaction and confidence

amongst protected groups, wider communities and victims of crime. Tackle hate crime and address any complaints and concerns raised.

Attract, recruit, progress and retain a more diverse workforce

that better reflects our communities to improve confidence in Essex Police.

Narrow the disparity

between protected groups and non-protected groups in respect of the use of police powers such as stops, searches and the use of force. Improve the experience of policing services without reducing the legitimate use of police powers to protect communities.

Outcome:
Policing with the consent of all communities



FIND OUT MORE ON CONNEXION: PEOPLE > DIVERSITY AND INCLUSION



Policing Makeup

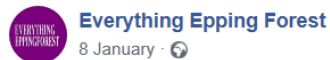
- Local Policing Teams (LPT)
- Community Policing Teams (CPT)
- Criminal Investigation Department (CID)



Delivering Community Priorities

- Closure Orders
- Saving Lives
- Meridian Way
- Arson Series
- Conviction of Terence Glover

page 12



Everything Epping Forest

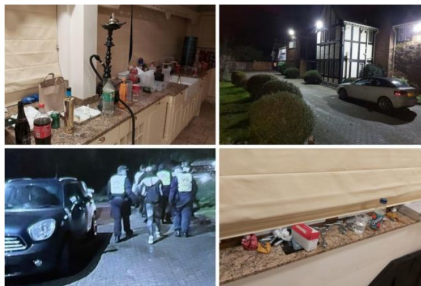
8 January · 🌐

BREAKING: Terence Glover has been given indefinite hospital order after killing Harley Watson by deliberately driving his car at him. A number of others were hurt. He will serve 15 years for manslaughter with concurrent 10-year sentence for attempted murders in secure hospital.

Knoll House Covid-19 party rental property closed by police



By Lewis Berrill | [@LewisBerrill](#)
Chief reporter - east London and west Essex



A man has been charged following a car fire in Bradley Road, Waltham Abbey, on 15 August.



Mohammed Azizi, 29, of Bradley Road, Waltham Abbey, was charged today, Thursday 27 August, with committing arson with recklessness as to whether life was endangered.

He was also charged with possession of cocaine.

He is due to appear at Chelmsford Magistrates' Court tomorrow, Friday 28 August.

We remind people not to make any comments that could identify those involved or that could prejudice the ongoing investigation and court proceedings.



Performance

12% reduction on overall crime

Approximately 40% of violent crime is in a domestic abuse setting

38% reduction in dwelling burglary, yet 5 more solved

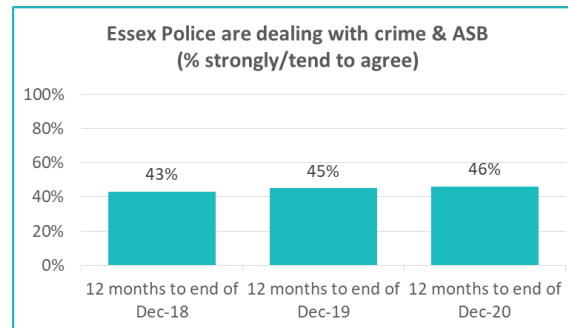
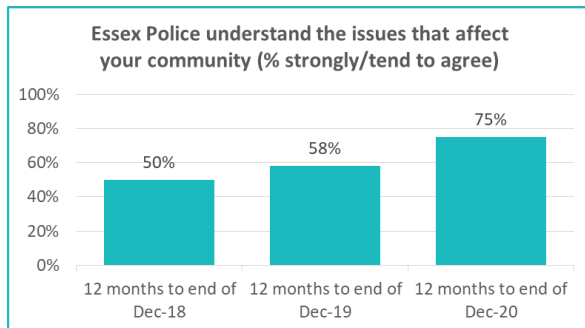
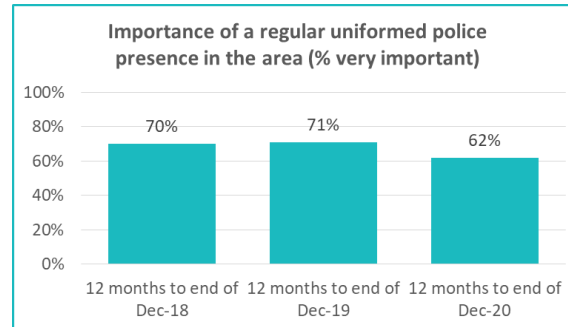
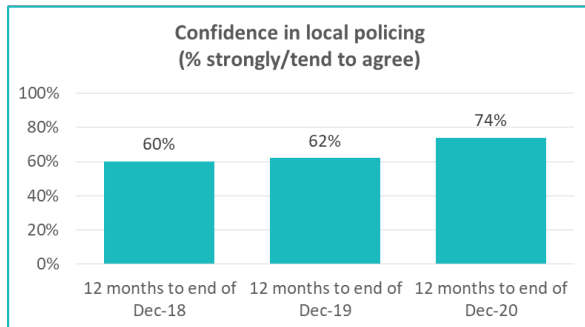
45% increase in Racially or Religiously Aggravated offences 270% increase in solved outcomes

197 fewer domestic abuse crimes reported

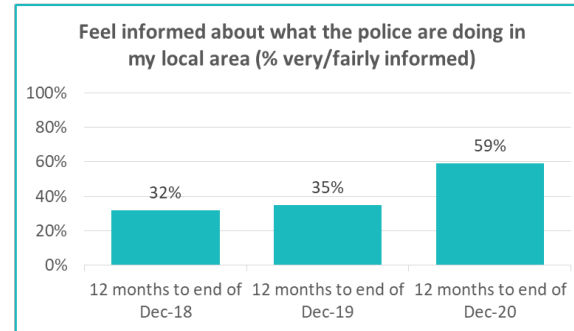
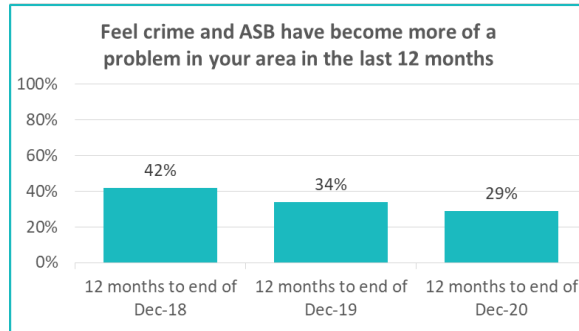
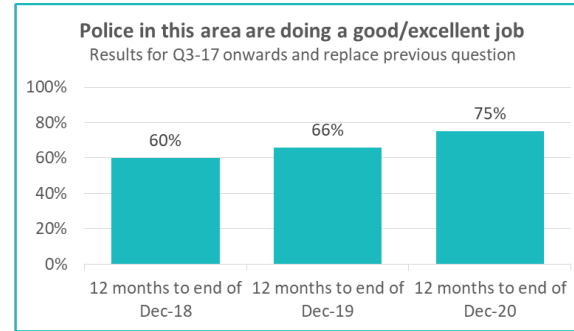
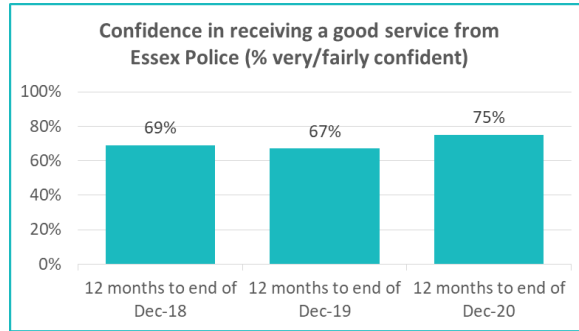
Crime Type	% DA 2021	Offences					Solved Outcomes					Solved Rates %		
		2020	2021	# diff.	% diff.	% All 2021	2020	2021	# diff.	% diff.	% All 2021	2020	2021	% pt. diff.
Anti-Social Behaviour (Incidents)	-	2669	4143	1474	55.2	-	-	-	-	-	-	-	-	-
All Crime (excl. Action (NFIB) Fraud)	16.8	11613	10196	-1417	-12.2	100.0	1146	1558	412	36.0	100.0	9.9	15.3	5.4
- Violence with Injury	44.1	892	758	-134	-15.0	7.4	120	136	16	13.3	8.7	13.5	17.9	4.5
- Violence without Injury	43.2	1603	1446	-157	-9.8	14.2	112	168	56	50.0	10.8	7.0	11.6	4.6
- Stalking and Harassment	27.4	1406	1559	153	10.9	15.3	88	111	23	26.1	7.1	6.3	7.1	0.9
Robbery	1.1	153	90	-63	-41.2	0.9	7	8	1	14.3	0.5	4.6	8.9	4.3
- Robbery of business property	0.0	9	4	-5	-55.6	0.0	0	1	1	-	0.1	0.0	25.0	25.0
- Robbery of Personal Property	1.2	144	86	-58	-40.3	0.8	7	7	0	0.0	0.4	4.9	8.1	3.3
- Burglary Dwelling (pre-Apr 17 definition)	0.9	569	351	-218	-38.3	3.4	21	26	5	23.8	1.7	3.7	7.4	3.7
- Theft from a Vehicle	0.0	989	611	-378	-38.2	6.0	9	3	-6	-66.7	0.2	0.9	0.5	-0.4
- Theft of a Vehicle	1.6	640	490	-150	-23.4	4.8	17	21	4	23.5	1.3	2.7	4.3	1.6
Racial/Religiously Aggravated Offences	0.0	110	160	50	45.5	1.6	10	37	27	270.0	2.4	9.1	23.1	14.0
Hate Crime HO Definition	2.2	186	271	85	45.7	2.7	23	38	15	65.2	2.4	12.4	14.0	1.7
Domestic Abuse	100.0	1905	1708	-197	-10.3	16.8	143	200	57	39.9	12.8	7.5	11.7	4.2



Epping Forest Q3 2020/21 Public Perception Survey Results



Epping Forest Q3 2020/21 Public Perception Survey Results



2021

- Disruptor Teams
- Domestic Abuse Problem Solving Teams
- Community Safety Team



Questions?



This page is intentionally left blank